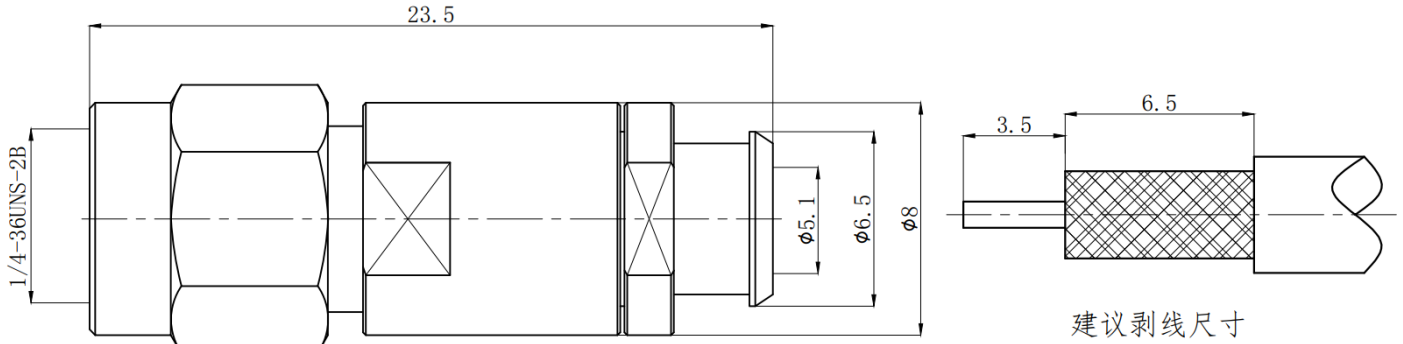


## SMA Male Cable Connector, RC18SM-B3507 DC-18GHz, Straight, Attachment for 3507Series Cable

### Dimensions(mm) Tolerance $\pm 1\%$



### Electrical & Environmental

Frequency Range	DC-18GHz
Impedance	50 ohm
VSWR	1.07 max
Withstand Voltage	750 V
Mating Cycles	> 500 Cycles
Temperature Range	-55°C ~ +155°C

### Mechanical & Product Information

Product Number	RC18SM-B3507
Product Type	SMA Male, Cable Connector
Shape/Mounting	Straight
Attachment Method	Solder
Attachment for	3507 Series Cable
Connector Body	Passivated stainless steel/Gold plated brass
Center Contact	Gold plated beryllium copper
Insulator	PTFE
Dimension	23.5(L)*8( $\phi$ )mm