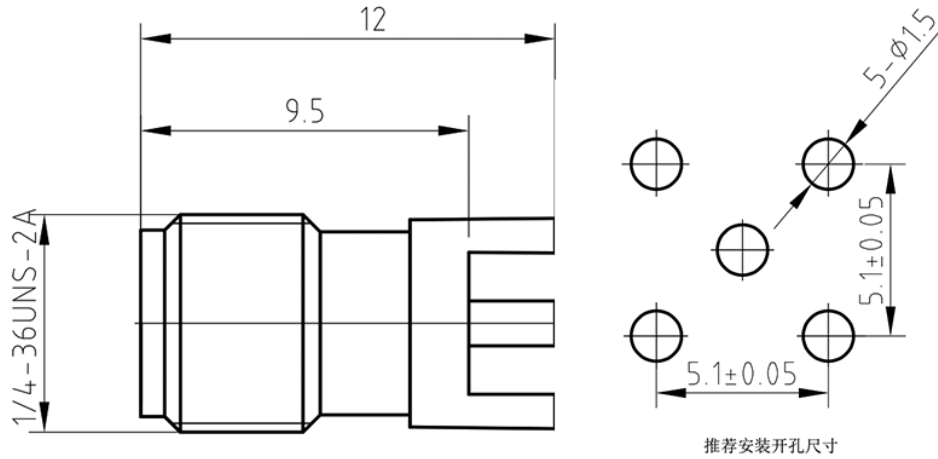




SMA Female PCB Connector, RC18SF-STH2-GBA DC-18GHz, Straight, 5.1mm Hole Spacing

Dimensions(mm) Tolerance $\pm 1\%$



Electrical & Environmental

Frequency Range	DC-18GHz
Impedance	50 ohm
VSWR	1.25 max
Contact Resistance	\leq In:3.0/Out:2.0 m Ω
Insulation Resistance	\geq 5000 M Ω
Withstand Voltage	1000 V
Mating Cycles	> 500 Cycles
Temperature Range	-55 $^{\circ}$ C ~ +155 $^{\circ}$ C

Mechanical & Product Information

Product Number	RC18SF-STH2-GBA
Product Type	SMA Female, PCB Connector
Shape/Mounting	Straight
Attachment Method	Solder
Connector Body	Gold plated brass
Center Contact	Gold plated beryllium copper
Insulator	PTFE
Dimension	12(L)mm