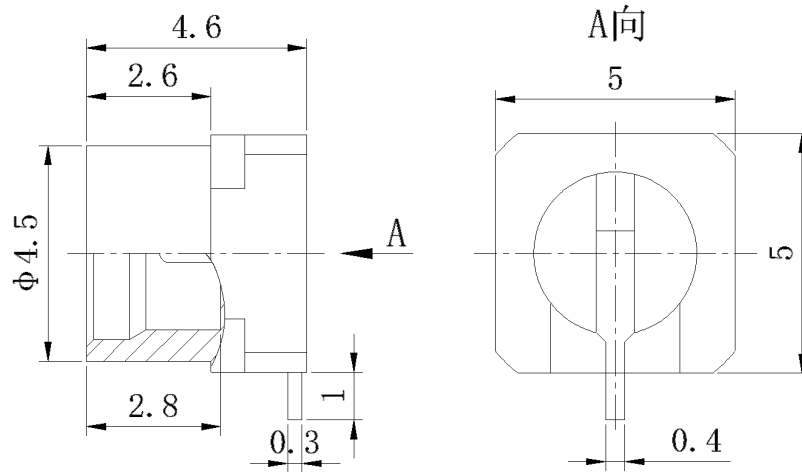


SMP(GPO) Male Smooth Bore PCB Connector, RC12PMS-SSM04-GBA DC-12GHz, Straight, 0.4mm Pin

Dimensions(mm) Tolerance $\pm 1\%$



Electrical & Environmental

Frequency Range	DC-12GHz
Impedance	50 ohm
VSWR	1.3 max
Insulation Resistance	$\geq 5000 \text{ M}\Omega$
Withstand Voltage	500 V
Mating Cycles	> 500 Cycles
Temperature Range	-55°C~+125°C

Mechanical & Product Information

Product Number	RC12PMS-SSM04-GBA
Product Type	SMP(GPO) Male Smooth Bore, PCB Connector
Shape/Mounting	Straight
Attachment Method	Solder
Connector Body	Gold plated brass
Center Contact	Gold plated brass
Insulator	PEEK
Dimension	4.6(L)mm