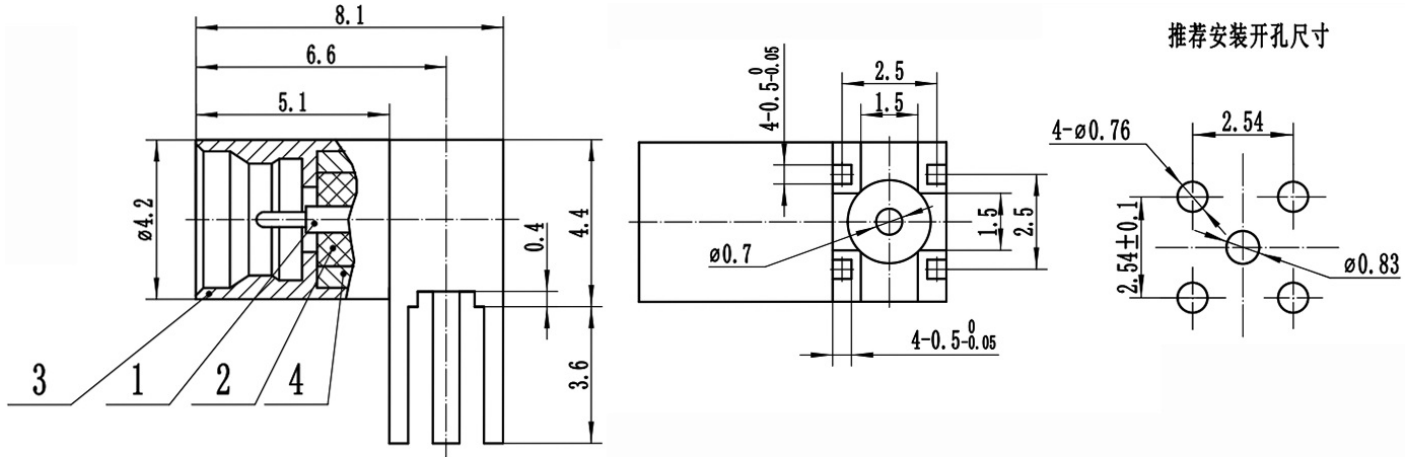


SMP(GPO) Male PCB Connector, RC06PMW-STH07
DC-6GHz, Right Angle, 2.54mm Hole Spacing, 0.7mm Pin

Dimensions(mm) Tolerance±1%



Electrical & Environmental

Frequency Range	DC-6GHz
Impedance	50 ohm
VSWR	1.3 max
Insulation Resistance	$\geq 5000 \text{ M}\Omega$
Withstand Voltage	500 V
Mating Cycles	> 500 Cycles
Temperature Range	-55°C ~ +155°C

Mechanical & Product Information

Product Number	RC06PMW-STH07
Product Type	SMP(GPO) Male, PCB Connector
Shape/Mounting	Right Angle
Attachment Method	Solder
Connector Body	Gold plated brass/Passivated stainless steel
Center Contact	Gold plated Tin bronze
Insulator	PTFE
Dimension	8.1(L)*8(W)*4.2(ϕ)mm