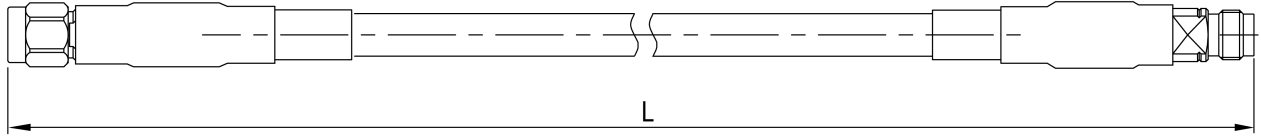




Armored Test Cable Assembly, RCP670E-KMUF-L 2.92mm Male to 2.4mm Female, DC-40GHz, ϕ 6.7mm

Dimensions(mm) Tolerance \pm 1%



Electrical & Environmental

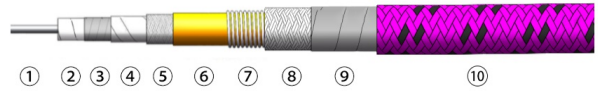
Frequency Range	DC-40GHz, 50 Ohms
Avg Power@25°C	39.9W @40GHz
IL@1M	3.18 dB Max @40GHz
VSWR	1.3 Max
VOP	83%
SE	90dB Min
ATTEN-STAB	\pm 0.04dB
Mech. Phase	\pm 4°
OT	-55~+125°C

Product Information

Product Number	RCP670E-KMUF-L
Product Type	Armored Test Cable Assembly
Cable	RCT400/RCP670
Connector	2.92mm(K,SK) Male to 2.4mm Female
Connector Body	Passivated stainless steel
Center Contact	Gold plated beryllium copper
Bend Radius	33.00mm
Bend Radius (Rep.)	67.00mm

Customized services: including connectors, length, phase matching/tracking, time delay, and better electrical performance.

RCT400/RCP670 Structure Characteristics



Structure	Material	Φ D(mm)
1.Center Conductor	Single-core Silver-plated Copper	0.91
2.Dielectric	LD-PTFE	2.50
3.Inner shield	Silver-plated Copper Tape Braiding	2.66
4.Interlayer	LD-PTFE	2.95
5.Outer Shield	Silver-plated Copper Wire Braiding	3.40
6.Jacket	Yellow FEP	4.20
7.Spring	Silver-plated Copper	5.34
8.Braided Layer	Tinned Wire	5.74
9.Stable Layer	PTFE	6.00
10.Armor Jacket	Purplish Black PTFE	6.70

Product Selection and Loss Index @25°C

RFTOP P/N	3GHz	22GHz	40GHz
RCP670E-KMUF-600	1.00 dB	1.71 dB	2.15 dB
RCP670E-KMUF-1M	1.27 dB	2.45 dB	3.18 dB
RCP670E-KMUF-1.5M	1.61 dB	3.38 dB	4.46 dB
RCP670E-KMUF-2M	1.94 dB	4.31 dB	5.75 dB



Armored Test Cable Assembly, RCP670E-KMUF-L
2.92mm Male to 2.4mm Female, DC-40GHz, ϕ 6.7mm

Typical Test Data

