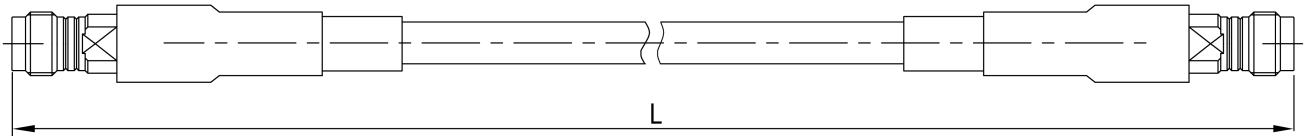




Armored Test Cable Assembly, RCP500E-VFVF-L 1.85mm Female to 1.85mm Female, DC-67GHz, \varnothing mm

Dimensions(mm) Tolerance \pm 1%



Electrical & Environmental

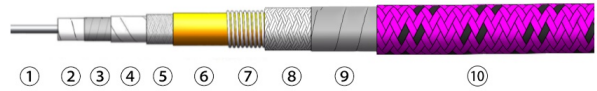
Frequency Range	DC-67GHz, 50 Ohms
Avg Power@25°C	12.6W @67GHz
IL@1M	7.41 dB Max @67GHz
VSWR	1.3 Max
VOP	76%
SE	90dB Min
ATTEN-STAB	\pm 0.08dB
Mech. Phase	\pm 6.7°
OT	-40~+125°C

Product Information

Product Number	RCP500E-VFVF-L
Product Type	Armored Test Cable Assembly
Cable	RCT260Z/RCP500E
Connector	1.85mm Female to 1.85mm Female
Connector Body	Passivated stainless steel
Center Contact	Gold plated beryllium copper
Bend Radius	13.00mm
Bend Radius (Rep.)	26.00mm

Customized services: including connectors, length, phase matching/tracking, time delay, and better electrical performance.

RCT260Z/RCP500E Structure Characteristics



Structure	Material	Φ D(mm)
1.Center Conductor	Single-core Silver-plated Copper	0.51
2.Dielectric	LD-PTFE	1.55
3.Inner shield	Silver-plated Copper Tape Braiding	1.70
4.Interlayer	LD-PTFE	2.05
5.Outer Shield	Silver-plated Copper Wire Braiding	2.35
6.Jacket	Yellow FEP	3.00
7.Spring	Silver-plated Copper	3.60
8.Braided Layer	Tinned Wire	3.95
9.Stable Layer	PTFE	4.25
10.Armor Jacket	Purplish Black PTFE	4.80

Product Selection and Loss Index @25°C

RFTOP P/N	3GHz	35GHz	67GHz
RCP500E-VFVF-600	1.64 dB	3.63 dB	4.81 dB
RCP500E-VFVF-1M	2.14 dB	5.44 dB	7.41 dB
RCP500E-VFVF-1.5M	2.76 dB	7.71 dB	10.67 dB
RCP500E-VFVF-2M	3.38 dB	9.99 dB	13.93 dB