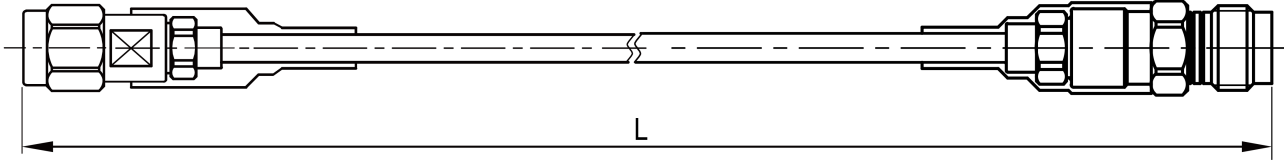




Ultra-Low Loss Phase Stable Cable Assembly, RCA220-KMVF-L 2.92mm Male to 1.85mm Female, DC-40GHz, ϕ 2.2mm

Dimensions(mm) Tolerance \pm 1%



Electrical & Environmental

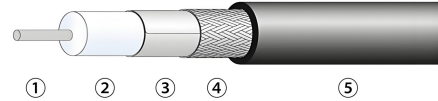
Frequency Range	DC-40GHz, 50 Ohms
Avg Power@25°C	9.8W @40GHz
I L@1M	4.94 dB Max @40GHz
VSWR	1.3 Max
Dk	1.49
Capacitance	80 pF/m
Inductance	0.21 uH/m
VOP	81%
SE	90dB Min
Voltage	500V@DC
Temp. Phase	750PPM Max
OT	-40~+125°C

Product Information

Product Number	RCA220-KMVF-L
Product Type	Ultra-Low Loss Phase Stable Cable Assembly
Cable	RCA220
Connector	2.92mm(K,SK) Male to 1.85mm Female
Connector Body	Passivated stainless steel
Center Contact	Gold plated beryllium copper
Bend Radius	8.80mm
Bend Radius (Rep.)	22.00mm

Customized services: including connectors, length, phase matching/tracking, time delay, and better electrical performance.

RCA220 Structure Characteristics



Structure	Material	Φ (mm)
1.Center Conductor	Single-core Silver-plated Copper	0.51
2.Dielectric	LD-PTFE	1.38
3.Inner shield	Silver-plated Copper Tape Wrapping	1.58
4.Outer Shield	Silver-plated Copper Wire Braiding	1.90
5.Jacket	Gray FEP	2.20

Product Selection and Loss Index @25°C

RFTOP P/N	3GHz	22GHz	40GHz
RCA220-KMVF-100	0.61 dB	0.82 dB	0.94 dB
RCA220-KMVF-150	0.67 dB	0.97 dB	1.17 dB
RCA220-KMVF-200	0.72 dB	1.13 dB	1.39 dB
RCA220-KMVF-300	0.84 dB	1.45 dB	1.83 dB
RCA220-KMVF-600	1.17 dB	2.40 dB	3.16 dB
RCA220-KMVF-1M	1.62 dB	3.66 dB	4.94 dB



Ultra-Low Loss Phase Stable Cable Assembly, RCA220-KMVF-L
2.92mm Male to 1.85mm Female, DC-40GHz, \varnothing 2.2mm

Typical Test Data

