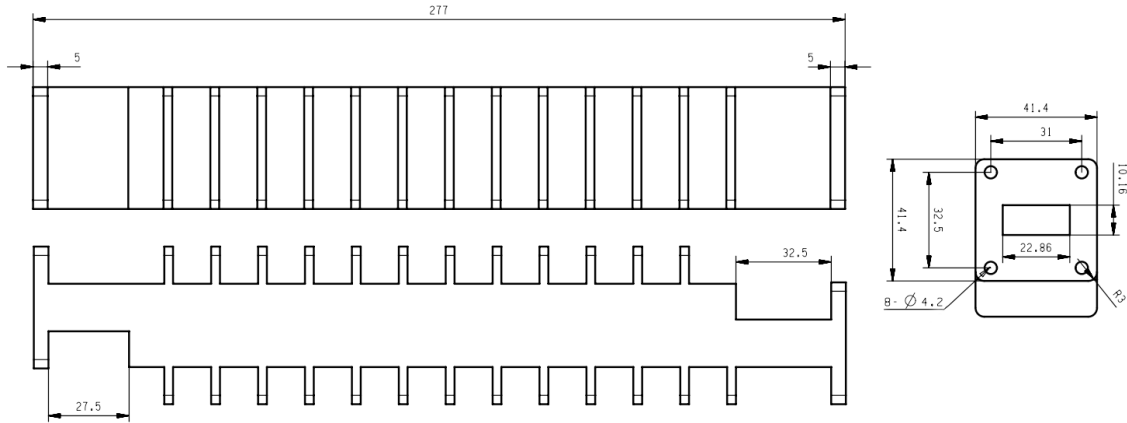


## WR90(BJ100) Waveguide Fixed Attenuator, **RWA90A-XX** 8.2-12.5GHz, 60W, 10-60dB, Bidirectional, FBP100(UBR) Flange

### Dimensions(mm) Tolerance±1%



### Electrical & Environmental

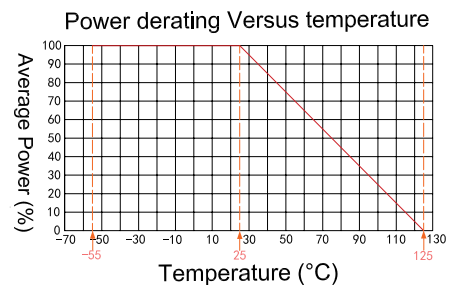
<b>Frequency Range</b>	8.2-12.5GHz
<b>VSWR</b>	1.2 Max
<b>Input Avg Power</b>	60W @25°C
<b>Temp Coefficient</b>	<0.0004 dB/dB/°C
<b>Direction</b>	Bidirectional
<b>Attenuation</b>	10-60dB
<b>Operating Temp</b>	-55°C~+100°C

Product Selection, Customizable		
RFTOP P/N	ATTEN	Accuracy
RWA90A-10	10 dB	±1.0 dB
RWA90A-20	20 dB	±1.0 dB
RWA90A-30	30 dB	±1.0 dB
RWA90A-40	40 dB	±1.0 dB
RWA90A-50	50 dB	±1.0 dB
RWA90A-60	60 dB	±1.0 dB

### Mechanical & Product Information

<b>Product Number</b>	RWA90A-XX
<b>Product Type</b>	Waveguide Fixed Attenuator, P-Grade
<b>Waveguide</b>	WR90(BJ100) , FBP100(UBR)正方形法兰
<b>Waveguide Body</b>	Aluminum, grey painted
<b>Waveguide Cavity</b>	Aluminum, electric conductive oxidation
<b>Heat Sink</b>	Black anodized aluminum

**Notes:** Pay attention to input/output. To ensure longevity and performance, do not use at full power for a long time. Peak power, pulse width, and duty cycle need to meet the requirements. Input high power, require heat dissipation, maintain temperature within 80°C. Reference Curve, derate linearly to 6W at 100°C.



1. Customized connectors, dimensions, directionality, PIM, dB values.
2. Refer to the RFTOP attenuator selection and usage guide.