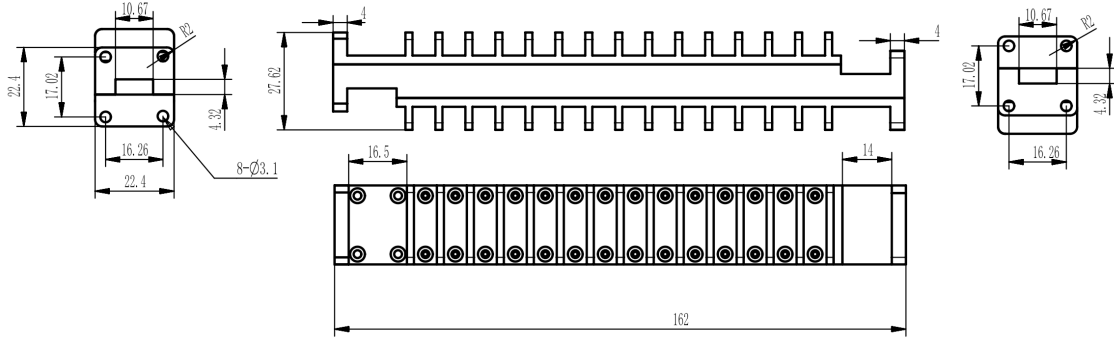


WR42(BJ220) Waveguide Fixed Attenuator, RWA42100UA-XX
17.6-26.7GHz, 100W, 10-60dB, Unidirectional, UBR220 Flange

Dimensions(mm) Tolerance±1%



Electrical & Environmental

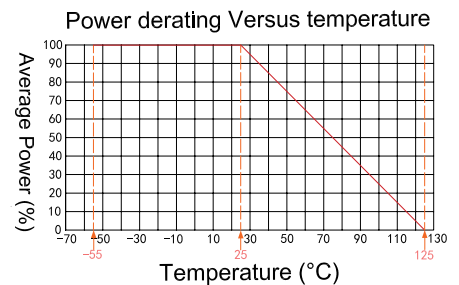
Frequency Range	17.6-26.7GHz
VSWR	1.2 Max
Input Avg Power	100W @25°C
Temp Coefficient	<0.0004 dB/dB/°C
Direction	Unidirectional
Attenuation	10-60dB
Operating Temp	-55°C~+100°C

Product Selection, Customizable		
RFTOP P/N	ATTEN	Accuracy
RWA42100UA-30	30 dB	±1.5 dB

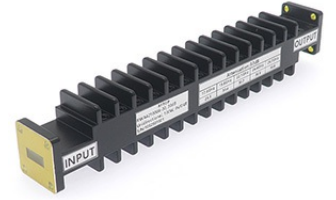
Notes: Pay attention to input/output. To ensure longevity and performance, do not use at full power for a long time. Peak power, pulse width, and duty cycle need to meet the requirements. Input high power, require heat dissipation, maintain temperature within 80°C. Reference Curve, derate linearly to 10W at 100°C.

Mechanical & Product Information

Product Number	RWA42100UA-XX
Product Type	Waveguide Fixed Attenuator, P-Grade
Waveguide	WR42(BJ220) , FBP220方形平法兰
Waveguide Body	Aluminum, Black painted
Waveguide Cavity	Aluminum, electric conductive oxidation
Heat Sink	Black anodized aluminum
Net Weight	About 132.0g



1. Customized connectors, dimensions, directionality, PIM, dB values.
2. Refer to the RFTOP attenuator selection and usage guide.



WR42(BJ220) Waveguide Fixed Attenuator, RWA42100UA-XX
17.6-26.7GHz, 100W, 10-60dB, Unidirectional, UBR220 Flange

Typical Test Data

