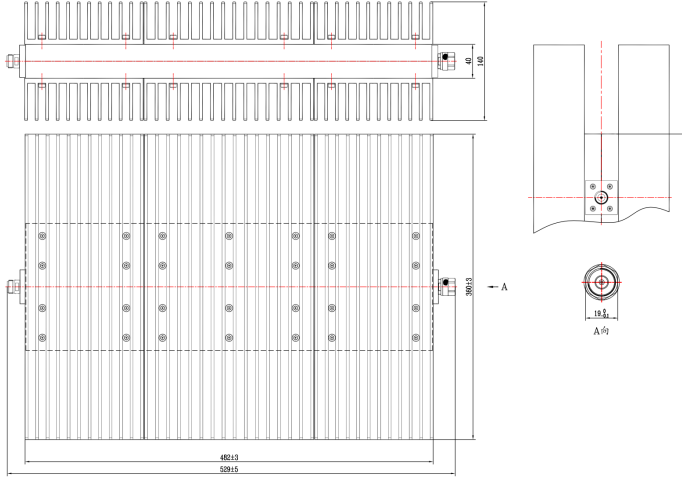


N Coaxial Fixed Attenuator, R4N1000UA-2-XX DC-4GHz, 1000W, 20-60dB, Unidirectional, Rectangular

Dimensions(mm) Tolerance±1%



Typical Value
RFTOP P/N
R4N1000UA-2-20
R4N1000UA-2-30
R4N1000UA-2-40
R4N1000UA-2-50
R4N1000UA-2-60

Electrical & Environmental

Frequency Range	DC-4GHz	Impedance	50 ohm	VSWR	1.25 max
Input Avg Power	1000W @25°C	Peak Power	10kW (5μsec pulse width, 5% duty cycle)		
Temp Coefficient	<0.0004 dB/dB/°C	Attenuation	20-60dB, Customizable		
Direction	Unidirectional,N male input to N female output				

Mechanical & Product Information

Product Number	R4N1000UA-2-XX, Professional	Connector	N
Connector Body	Ternary alloy plated brass	Heat Sink	Black anodized aluminum
Center Contact	Gold plated brass, Gold plated beryllium copper		
Operating Temp	-55°C~+125°C	Net Weight	-

Attenuation&Accuracy(DC-4GHz)

Attenuation(dB)	20	30	40	50/60
Accuracy(dB)	±3.0	±2.5	±2.5	±2.5

Notes

1. To maintain best performance, recommended to use fan to keep the case temp under 85°C.
2. Refer to the derating curve for power input,derate linearly to 100 W at 100°C.
3. Always pay attention to the direction of attenuators and note IN/OUT markings.
4. Customized dB values,outlines and optimal accuracy & VSWR available.

