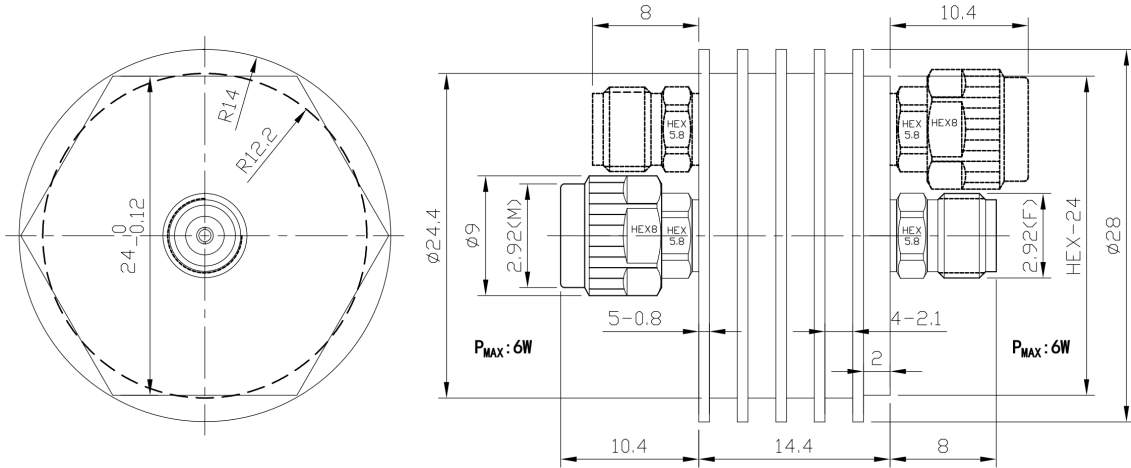




2.92mm Coaxial Fixed Attenuator, R405-XX DC-40GHz, 5W, 1-40dB, Bidirectional, Round

Dimensions(mm) Tolerance±1%



Electrical & Environmental

Frequency Range	DC-40GHz , 50Ohms
VSWR	1.26 Max
Input Avg Power	5W @25°C
Peak Power	200W (5μsec pulse width, 2% duty cycle)
Temp Coefficient	<0.0004 dB/dB/°C
Direction	Bidirectional, 2.92mm male to 2.92mm female
Attenuation	1-40dB
Operating Temp	-55°C~+100°C

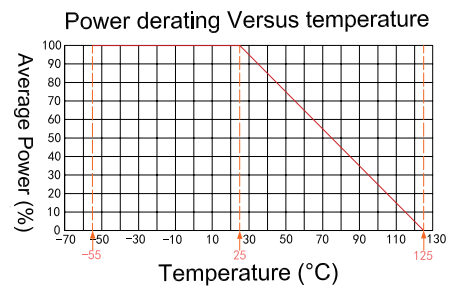
Product Selection, Customizable

RFTOP P/N	Attenuation	Accuracy
R405-3	3 dB	+1.0/-0.7 dB
R405-6	6 dB	+1.0/-0.7 dB
R405-10	10 dB	±0.8 dB
R405-15	15 dB	±0.8 dB
R405-20	20 dB	+1.0/-0.9 dB
R405-30	30 dB	+1.0/-0.9 dB
R405-40	40 dB	+1.0/-0.9 dB

Mechanical & Product Information

Product Number	R405-XX
Product Type	Coaxial Fixed Attenuator, JP-Grade
Connector	2.92mm male, 2.92mm female
Connector Body	Passivated stainless steel
Center Contact	1.27um Gold plated beryllium copper
Heat Sink	Black anodized aluminum
Net Weight	About 25.0g

Notes: Pay attention to input/output. To ensure longevity and performance, do not use at full power for a long time. Peak power, pulse width, and duty cycle need to meet the requirements. Input high power, require heat dissipation, maintain temperature within 80°C. Reference Curve, derate linearly to 0.5W at 100°C.



1. Customized connectors, dimensions, directionality, PIM, dB values.

2. Refer to the RFTOP attenuator selection and usage guide.



2.92mm Coaxial Fixed Attenuator, R405-XX DC-40GHz, 5W, 1-40dB, Bidirectional, Round

Typical Test Data

