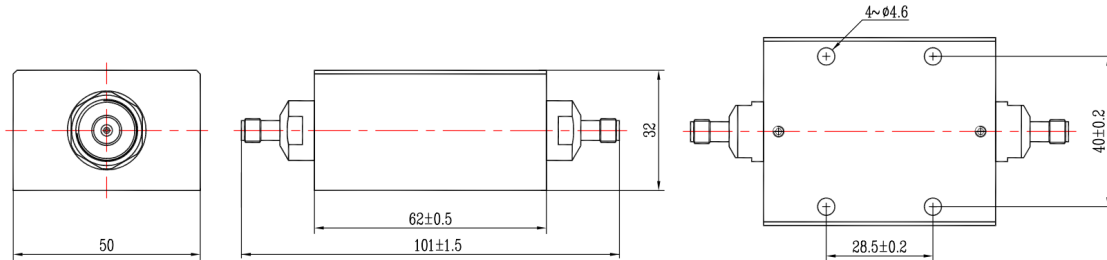




## SMA Coaxial Fixed Attenuator, R12S50UC-XX DC-12.4GHz, 50W, 1-50dB, Unidirectional, Rectangular

### Dimensions(mm) Tolerance±1%



### Electrical & Environmental

<b>Frequency Range</b>	DC-12.4GHz , 50Ohms
<b>VSWR</b>	1.35 Max
<b>Input Avg Power</b>	50W @25°C
<b>Peak Power</b>	500W (5μsec pulse width, 5% duty cycle)
<b>Temp Coefficient</b>	<0.0004 dB/dB/°C
<b>Direction</b>	Unidirectional, SMA female input to SMA female output
<b>Attenuation</b>	1-50dB
<b>Operating Temp</b>	-55°C~+100°C

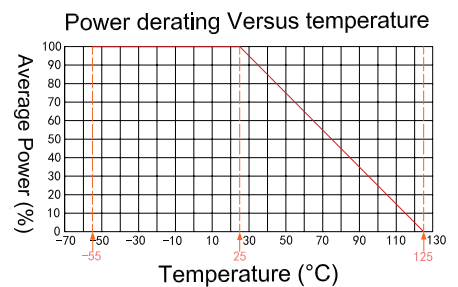
### Product Selection, Customizable

RFTOP P/N	ATTEN	Accuracy
R12S50UC-3	3 dB	±0.6 dB
R12S50UC-6	6 dB	±0.6 dB
R12S50UC-10	10 dB	±0.6 dB
R12S50UC-20	20 dB	±0.7 dB
R12S50UC-30	30 dB	±0.8 dB
R12S50UC-40	40 dB	±1.0 dB
R12S50UC-50	50 dB	±1.1 dB

### Mechanical & Product Information

<b>Product Number</b>	R12S50UC-XX
<b>Product Type</b>	Coaxial Fixed Attenuator, P-Grade, Built-IN
<b>Connector</b>	SMA female, SMA female
<b>Connector Body</b>	Passivated stainless steel
<b>Center Contact</b>	Gold plated beryllium copper
<b>Heat Sink</b>	Black anodized aluminum
<b>Net Weight</b>	About 290.0g

**Notes:** Pay attention to input/output. To ensure longevity and performance, do not use at full power for a long time. Peak power, pulse width, and duty cycle need to meet the requirements. Input high power, require heat dissipation, maintain temperature within 80°C. Reference Curve, derate linearly to 5W at 100°C.



1. Customized connectors, dimensions, directionality, PIM, dB values.

2. Refer to the RFTOP attenuator selection and usage guide.