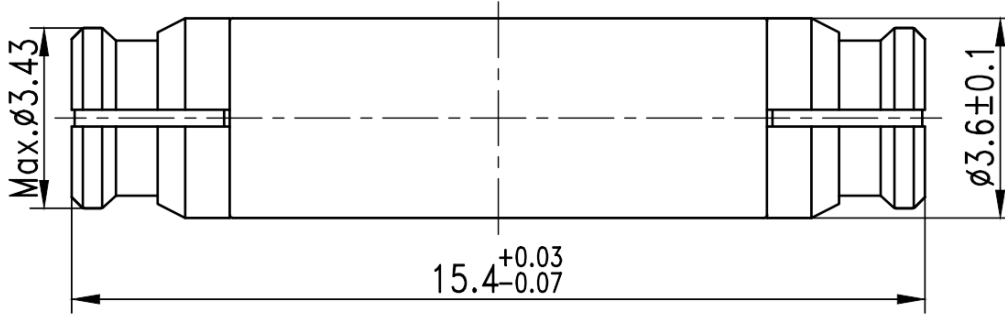


SMP(GPO) Female to SMP(GPO) Female, Adapter, RA40P01-GBC-2
DC-40GHz, Straight

Dimensions(mm) Tolerance $\pm 1\%$



Electrical & Environmental

| | | | |
|-----------------|----------|----------------|-----------------|
| Frequency Range | DC-40GHz | Impedance | 50 ohm |
| VSWR | 1.4 max | Operating Temp | -40°C to +155°C |

Mechanical & Product Information

| | | | |
|----------------|-------------------------------------|----------------|------------------------------------|
| Product Number | RA40P01-GBC-2, JP-Grade | Connector | SMP(GPO) Female to SMP(GPO) Female |
| Connector Body | Gold plated beryllium copper | Shape/Mounting | Straight, None |
| Center Contact | 1.27um gold plated beryllium copper | Insulator | PTFE |

